



BONES OF SKULL™

ANATOMICAL MODELS & MEDICAL SIMULATORS



Human Anatomy

Skull & Skull Bones



BOS 002
Skull New Model
6.5in*6.75in*4.5 in



BOS 001
Model Skull
6.5in*6.75in*4.5 in



BOS 002 A
Calvarium
5.2in*6.2in*3 in



BOS 001 A
Mid Part/ Base of Skull
7.5in*5 in*4.5 in



BOS 002 B
Mid Part/ Base of Skull
6.5in*5.25in*5.75 in



BOS 001 B
Calvarium
7.2in*5in*3.5 in



BOS 002 C
Mandible with Teeth
3.25in*3.25in*2 in



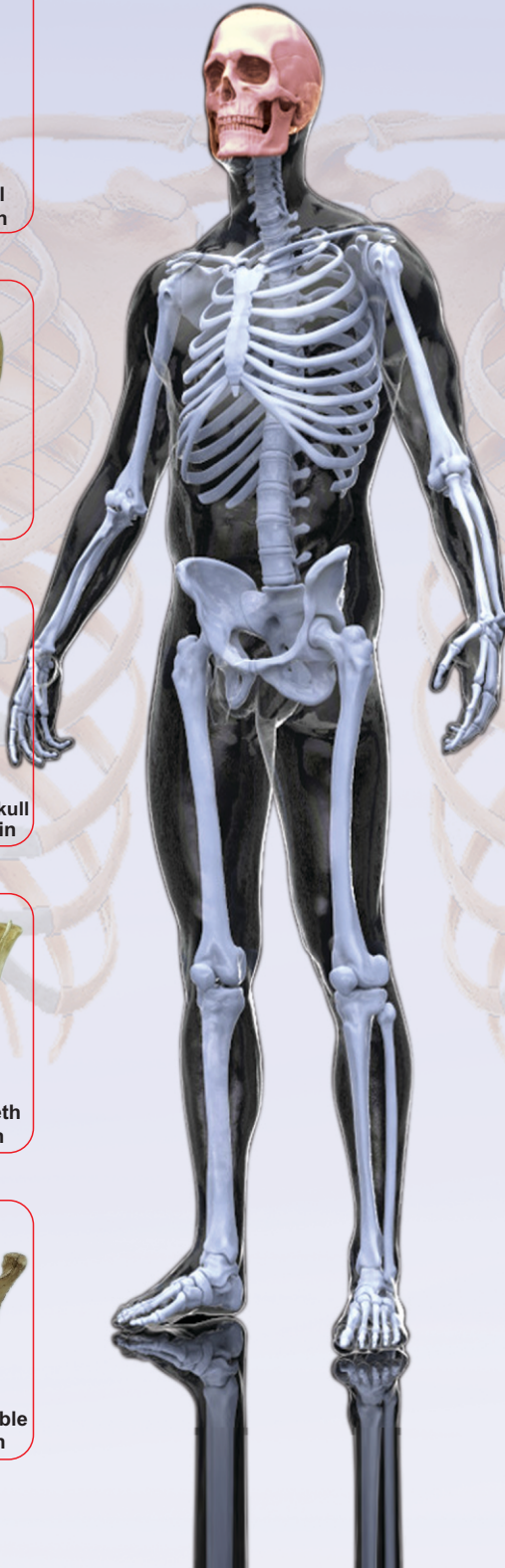
BOS 001 C
Mandible with Teeth
3 in*3.75in*2.5 in



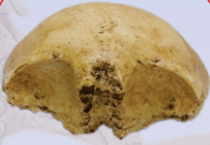
BOS 003 A
Edentulous mandible
3.2in*3.25in*2 in



BOS 003 B
Mandible without Teeth
3.2 in*3.25in*2 in



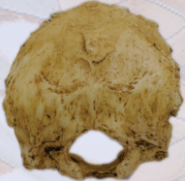
Skull & Skull Bones



BOS 004 A
Frontal Bone
99.2 mm*91.88mm



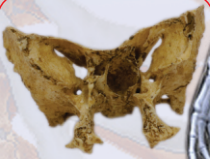
BOS 004E L
Parietal Bone
91.85mm*90.14mm



BOS 004 B
Occipital Bone
96.95mm*89.69mm



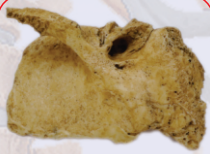
BOS 004E R
Parietal Bone
91.85mm*90.14mm



BOS 004 C
Sphenoid Bone
84.93mm*48.95mm



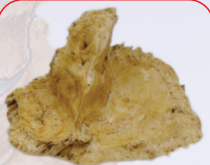
BOS 004F
Sag. Sec. Skull
97.14mm*93.29mm



BOS 004 D R
Temporal Bone
83.93mm*58mm



BOS 004G R
Maxilla
63.99mm



BOS 004 D L
Temporal Bone
75.48mm*65.12mm



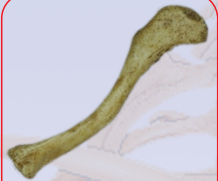
BOS 004G L
MAXILLA
63.99mm



Upper Limb Bones



BOS 005 R
Clavicle
127*27mm



BOS 005 L
Clavicle
127*27mm



BOS 006 R
Humerus
300mm*52.88mm



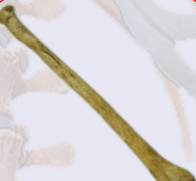
BOS 006 L
Humerus
300*52.88mm



BOS 007 R
Ulna
209mm*26.8mm



BOS 007 L
Ulna
209mm*26.8mm



BOS 008 R
Radius
228mm*31mm



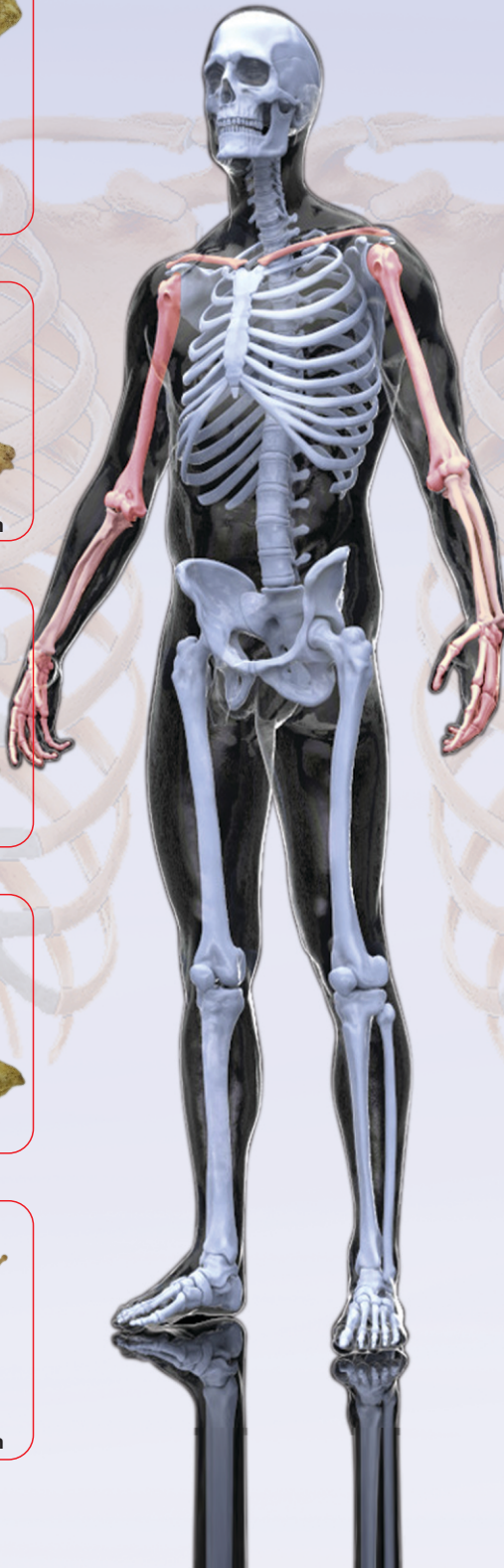
BOS 008 L
Radius
228mm*31mm



BOS 009 R
Hand
203mm*82.1mm



BOS 009 L
Hand
203mm*82.1mm



Lower Limb Bones



BOS 010 R
Femur
400mm*132mm



BOS 010 L
Femur
400mm*132mm



BOS 011 R
Patella
30mm*25mm



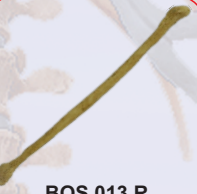
BOS 011 L
Patella
30mm*25mm



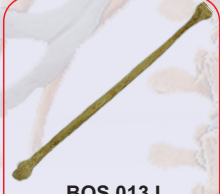
BOS 012 R
Tibia
342.5mm*67.6mm



BOS 012 L
Tibia
342.5mm*67.6mm



BOS 013 R
Fibula
336.5mm*13.78mm



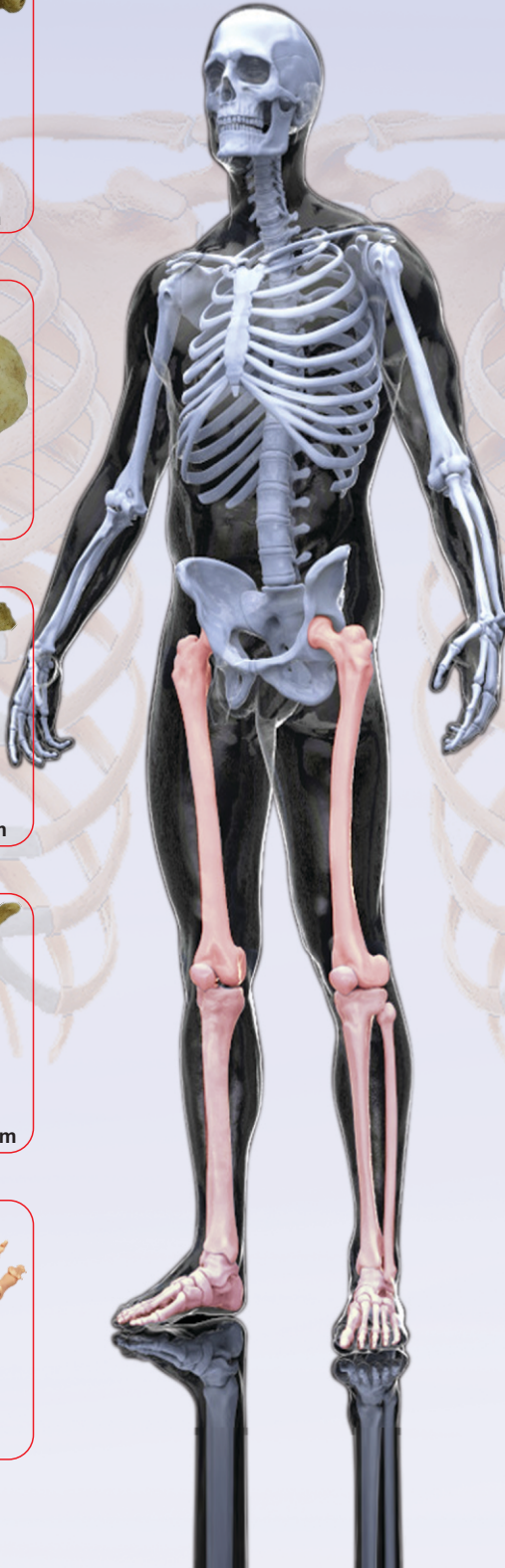
BOS 013 L
Fibula
336.5mm*13.78mm



BOS 014 R
Foot
254mm*152mm



BOS 014 L
Foot
254mm*152mm



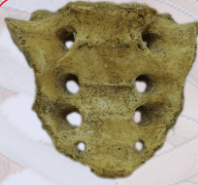
Ribs & Pelvis Bones



BOS 015
Sternum
144mm*50mm



BOS 016
Sternum
144mm*50mm



BOS 017
Sacrum
91.65*106*41.1mm



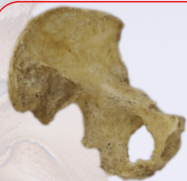
BOS 018
Sacrum
91.65*106*41.1mm



BOS 019 R
Ribs



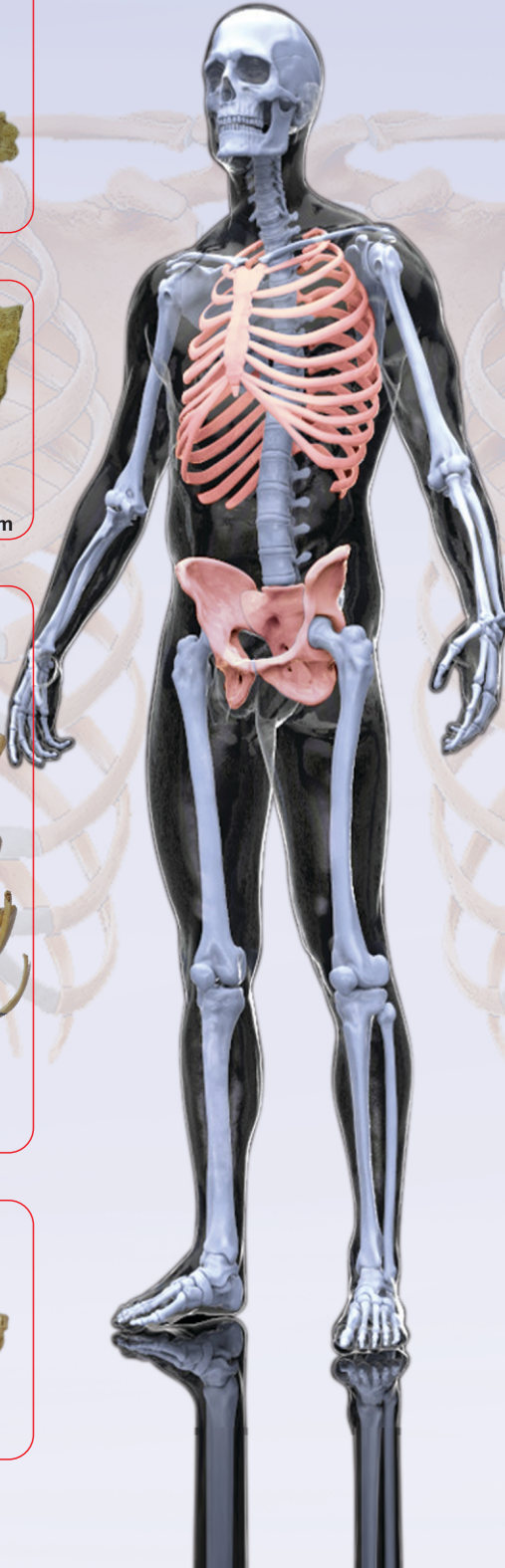
BOS 019 L
Ribs



BOS 020 R
Hip Bone
190.5*132mm



BOS 020 L
Hip Bone
190.5*132mm



Scapula, Veretebrae & Pelvis



BOS 021 R
Scapula
165*54 mm



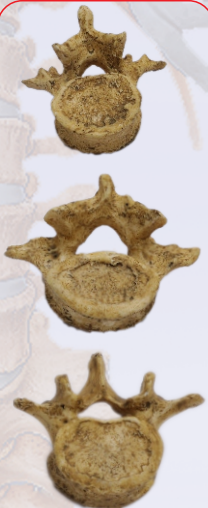
BOS 021 L
Scapula
165*54 mm



BOS 022
Cervical Vertebrae



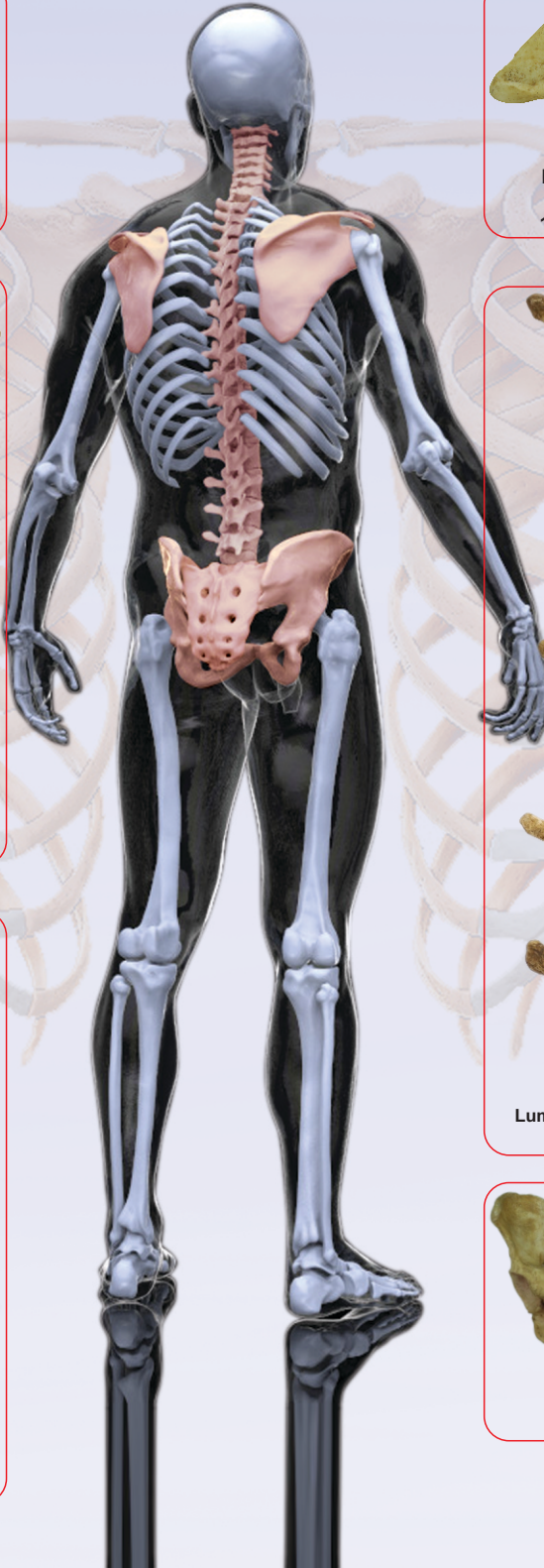
BOS 024
Lumbar Vertebrae



BOS 023
Thoracic Vertebrae



BOS 025
Pelvis



SKILL LAB MODELS



**Penis
Catheter Model**



**Vagina
Catheter Model**



**Penis
Catheter Model**



**Vagina
Catheter Model**



**Breast Lump
Detection Model**



**Dental
Suture Model**

SKILL LAB MODELS



Suture Model 1



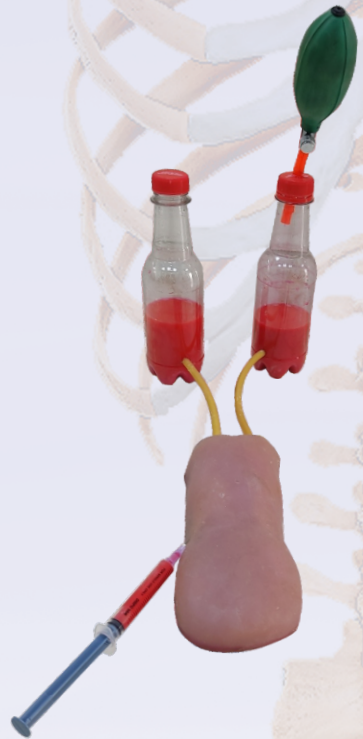
Suture Model 2



Suture Model 3



**IV Practice Arm
Infusion Model**



**IV Practice Arm
Infusion Model**

Articulated Skeleton



HISTOPATHOLOGICAL SLIDES (HUMAN)

ILEUM, LARGE INTESTINE, VERMIFORM APPENDIX, COLON, LIVER, GALL
BLADDER, KIDNEY, URETER,

TESTIS, VAS DEFERENCE, PROSTATE, OVARY, FALLOPIAN TUBE, CERVIX,
UMBICAL CORD,CORPUS

LUTEUM, MAMMARY GLAND, UTERUS RESTING PHASE,TONGUE L.S SHOW
CIRCUMVALLATE PAPILLA

TRANSITIONAL EPITHELIUM (STRETCHED BLADDER), ADIPOSE TISSUE,
COMPACT BONE (LS)

ELASTIC / LARGE ARTERY, LARGE VEIN, THIN SKIN, THICK SKIN

HUMAN SKIN WITH HAIR FOLLICIE & SEBACEOUS.

DIFFERENT BONE VARIATIONS ALSO AVAILABLE

SKULL MALE AND FEMALE

UPPER LIMB MALE

PELVIS MALE AND FEMALE

INFANT SKULL

MIXED AGE MANDIBLES

STERNUM MALE AND FEMALE

LOWER LIMB MALE FEMALE

HUMERUS FEMALE



BONES OF SKULLTM

📍 K-53, West Patel Nagar, New Delhi-110008

☎ +91 9810588844
011-45561879

🌐 www.bonesofskull.com

✉ bonesofskull@gmail.com